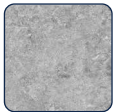




RB30BV

OUR LATEST 9" BLADE FOR BATTERY POWERED SAWS



Concrete



Brick



Block



Concrete
Pavers

General Tool is introducing our latest blade for battery-powered saws. This unique blade is designed to be extremely free cutting on a wide range of construction materials to offer the maximum number of cuts per charge.

The notched turbo design provides the fastest cutting speed on concrete, brick, block, and pavers while the 12mm segment height provides the users with longer blade life.



GENERAL TOOL

INNOVATOR IN TECHNOLOGY

NEW

12mm Segment Height

2.5mm Thickness

9" (230mm) OD

7/8-5/8" Arbor

Part Number: RB30BV0909C

